

Weathershield WPR-VA0.4

Datasheet.

Features.

Compatible

with all cameras of the ExCam Series with the model keys T08/T10-VA0.4.

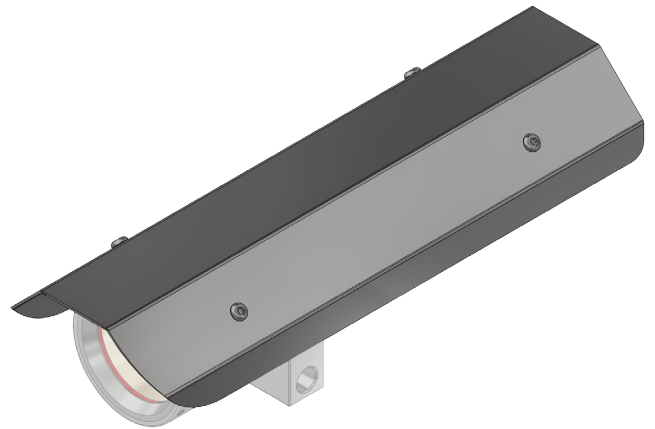
Data.

Mechanical Characteristics

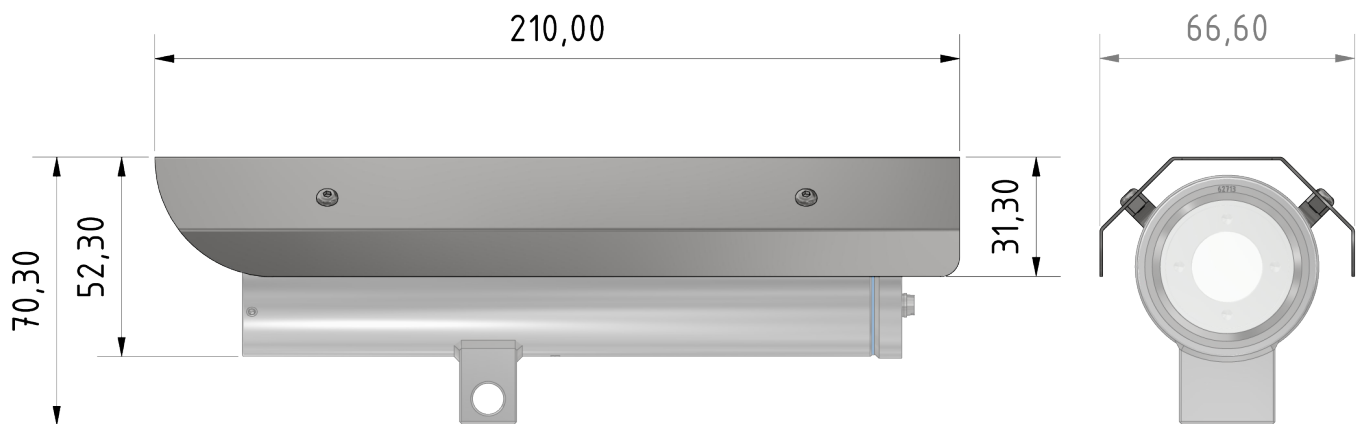
Material: Stainless steel AISI 316L/1.4404
Weight: 0.2 kg
Dimensions: WxHxD 66.6x31.3x210

Scope of Delivery

includes
-2 attachments
-screws
-assembly instruction



Dimensions [mm].



* = Illustration shows weathershield mounted on a camera Camera not included.



Schillerstrasse 17
D-35102 Lohra-Altenvers

info@samcon.eu
T: +49 6426 9231-0
F: +49 6426 9231-31